

## Artist Resources – Ferdinand Hodler (Swiss, 1853 – 1918)



Hodler, 1908  
Photograph: Camille Ruf

[Hodler at the Art Institute of Chicago](#)

[Hodler at MoMA](#)

The University Art Museum, Berkely installed the exhibition *Ferdinand Hodler: Expressionism Versus Symbolism* in 1973. [Read a review](#) of the exhibition by art historian and critic Robert Pincus-Witten in Artforum.

In 1979, the Guggenheim Museum installed a Hodler retrospective in its galleries. [Listen to an interview](#) on “Round and About the Guggenheim Museum with Mimi Poser” with exhibition organizer Eva Wyler.

Read a review of the 2008 exhibition *Ferdinand Hodler – A Symbolist Vision* in the [Tretyakov Gallery Magazine](#). The exhibition was a large retrospective of the artist’s work in the Kunst Museum Bern.

[Ferdinand Hodler: View to Infinity](#) was installed at the Neue Galerie in 2012, the largest exhibition of Hodler’s work ever exhibited in the United States. View [installation shots](#) and take an [iTunes](#) or [Google Play](#) audio tour. Hyperallergic’s Thomas Micchelli wrote a review: [“Housetraining Weird Uncle Ferdinand.”](#)

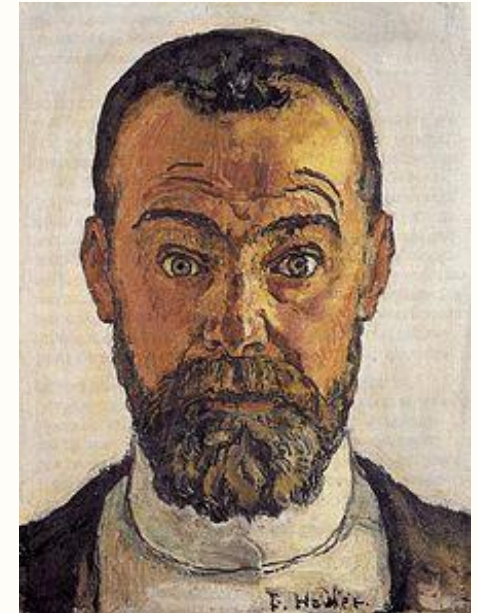
[Take a walkthrough](#) of a 2013 exhibition of Hodler’s paintings at the [Fondation Beyeler](#) with curator Ulf Küster.

The Leopold Museum’s *Ferdinand Hodler: Elective Affinities from Klimt to Schiele* was “the most comprehensive retrospective exhibition of works by Ferdinand Hodler (1853-1918) in Austria since the artist’s resounding success at the 1904 Secession exhibition.”

Hodler was invited to join both the Berlin Secession and the Vienna Secession groups. His first display with the latter was in the 19<sup>th</sup> Vienna Secession exhibition in 1904. The 2021 exhibition [Hodler, Klimt and the Wiener Werkstätte](#) at the Kunsthaus, Zürich traced the history of this movement through the work of these major artists.

[Hodler//Parallelism](#) was installed at the Kunst Museum Bern in 2019. Read an article about the exhibition by Martin Oldham in Apollo Magazine, [“Ferdinand Hodler’s Symbolic Hold on the Swiss Imagination.”](#)

A 2021-2022 exhibition entitled [Ferdinand Hodler and Modernist Berlin](#) at the Berlinische Galerie Museum of Modern Art explores the artist’s connection to the city of Berlin, where he exhibited almost annually from 1898 until the outbreak of World War I. Read an article about the exhibition by Catherine Hickley: [“How Berlin Made Ferdinand Hodler, and Vice-Versa.”](#)



Hodler Self-Portrait, 1912

Ferdinand Hodler (Swiss, 1853-1918)

**Genfersee mit Salève und Schwänen (Lake Geneva with Salève and Swans)**, c. 1914

Oil on canvas

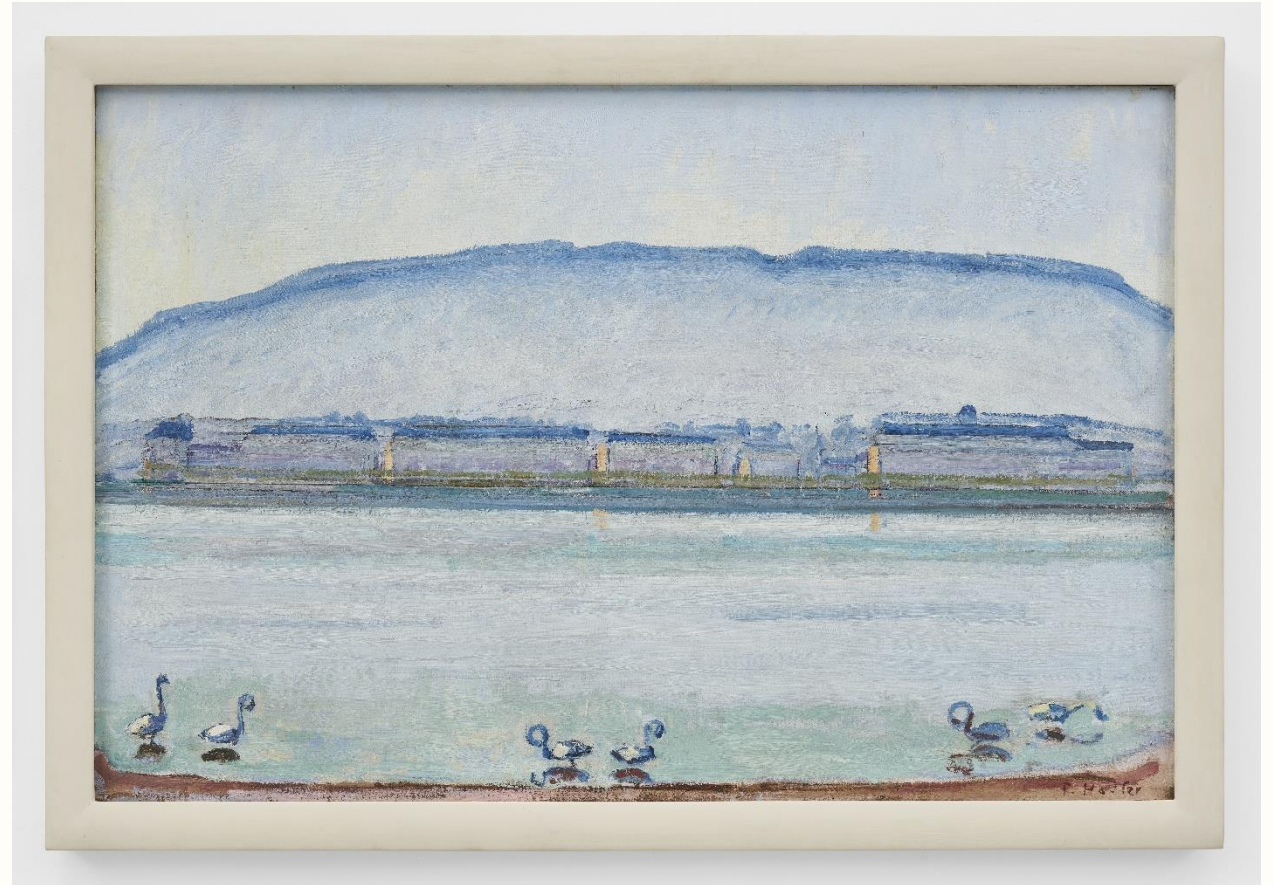
Private Collection; L2026:18.3

Born and raised in Bern, Ferdinand Hodler moved to Geneva at the age of eighteen to begin his career as a painter. He soon developed his idea of “parallelism,” which guided his work to depict the symmetry, rhythm, and order of the natural world.

**Genfersee mit Salève und Schwänen (Lake Geneva with Salève and Swans)** features one of Hodler’s favorite landscape views.

Although he rarely painted evidence of human civilization, this example features a gleaming row of houses on the opposite shore. As the artist once said: “Now if we compare our own lives and customs with these appearances in nature, we shall be astonished to find the same principle repeated.”

*On view April 8 – July 12, 2026*





Ferdinand Hodler (Swiss, 1853-1918)  
**Schnee im Engadin (Snow in the Engadin)**, 1907  
Oil on canvas

Private Collection; L2021:184.8

Ferdinand Hodler, one of the most influential Swiss artists at the turn of the 20<sup>th</sup> century, saw himself as a figure painter despite the popularity of his landscapes. In the artist's lifetime, Switzerland began experiencing a tourism boom in the wake of new industrial developments. Hodler's landscapes are untouched; they harken to an age before electrical power and automobiles made the mountainous country more accessible. **Schnee im Engadin (Snow in the Engadin)** depicts the Engadin Valley, a long, high region in the eastern Swiss Alps. An expanse of blue sky takes up the majority of the composition with undisturbed blankets of snow below. Hodler once said: "When you look up at the sky, you have a feeling of unity which delights you and makes you giddy."

*On view April 13 – July 17, 2022*