

Artist Resources – Ernst Ludwig Kirchner (German, 1880-1938)

[Kirchner at MoMA](#)

[Kirchner at the National Gallery of Art](#)

[Kirchner at the Guggenheim](#)

[Kirchner at Thyssen-Bornemisza](#)

[The Kirchner Museum Davos](#)



Kirchner photographic self-portrait, 1919

The Museum of Modern Art produced the exhibition [Kirchner and the Berlin Street](#) in 2008, focusing on the artist's street scene series produced between 1913 and 1915.

The 2010 [retrospective](#) at the Städel Museum was the first such exhibition of the artist's work in Germany in 30 years, bringing together 170 of his works. In 2012, The [Fundación Mapfre](#) in Madrid installed the first retrospective of the artist's work in Spain.

[Ernst Ludwig Kirchner: Hieroglyphics](#) was on display at the Hamburger Bahnhof – Nationalgalerie der Gegenwart in 2016-2017. Watch a [video](#) about the exhibition produced by the museum.

In 2018, the Guggenheim Museum agreed to [return](#) a Kirchner painting to its rightful owner when it was determined to have been stolen by the Nazis during World War II.

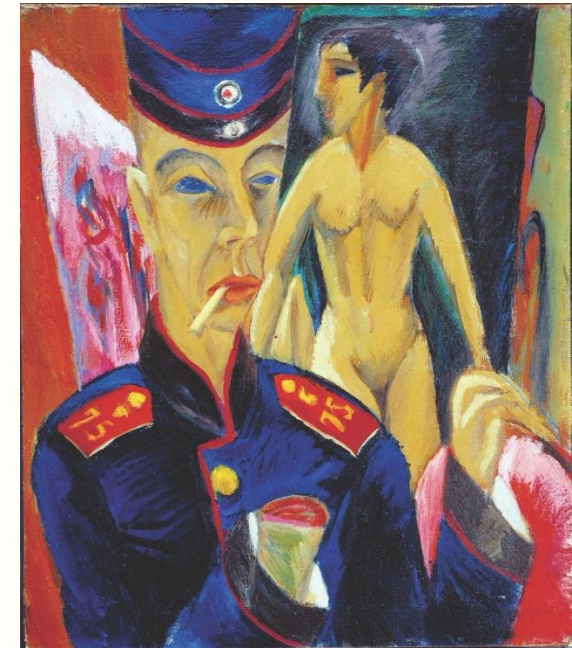
In 2019, the [Neue Galerie](#) installed a major solo exhibition paying "tribute to Kirchner's inventive genius with a focus on his highly individual approach to color." Watch a [video](#) with co-curators Jill Lloyd and Janis Staggs discussing the exhibition and read a reviews in [Art in America](#), the [New York Times](#), and [Hyperallergic](#).

Read a 2021 [article](#) by Leonard V. Smith about Kirchner's famous *Self Portrait as a Soldier*, one of the most famous European paintings produced during World War I.

The 2021 exhibition [Kirchner and Nolde: Expressionism. Colonialism](#) at the Stedelijk Museum asked the question: "What is the relationship between the two Expressionists' distinctive visual style and the colonial reality from which it emerged?"

Kirchner's violent death has long been a focus of his biography. In 2021, 80 years after his apparent suicide, [experts believe](#) it may have been murder.

In 2024, the Yale Art Gallery will produce [Edvard Munch and Ernst Ludwig Kirchner: Anxiety and Expression](#) featuring more than 60 works on paper by both artists.



Kirchner, *Self-Portrait as a Soldier*, 1915

Ernst Ludwig Kirchner (German, 1880-1938)

Zwei rote Tänzerinnen (Two Red Dancers), 1914

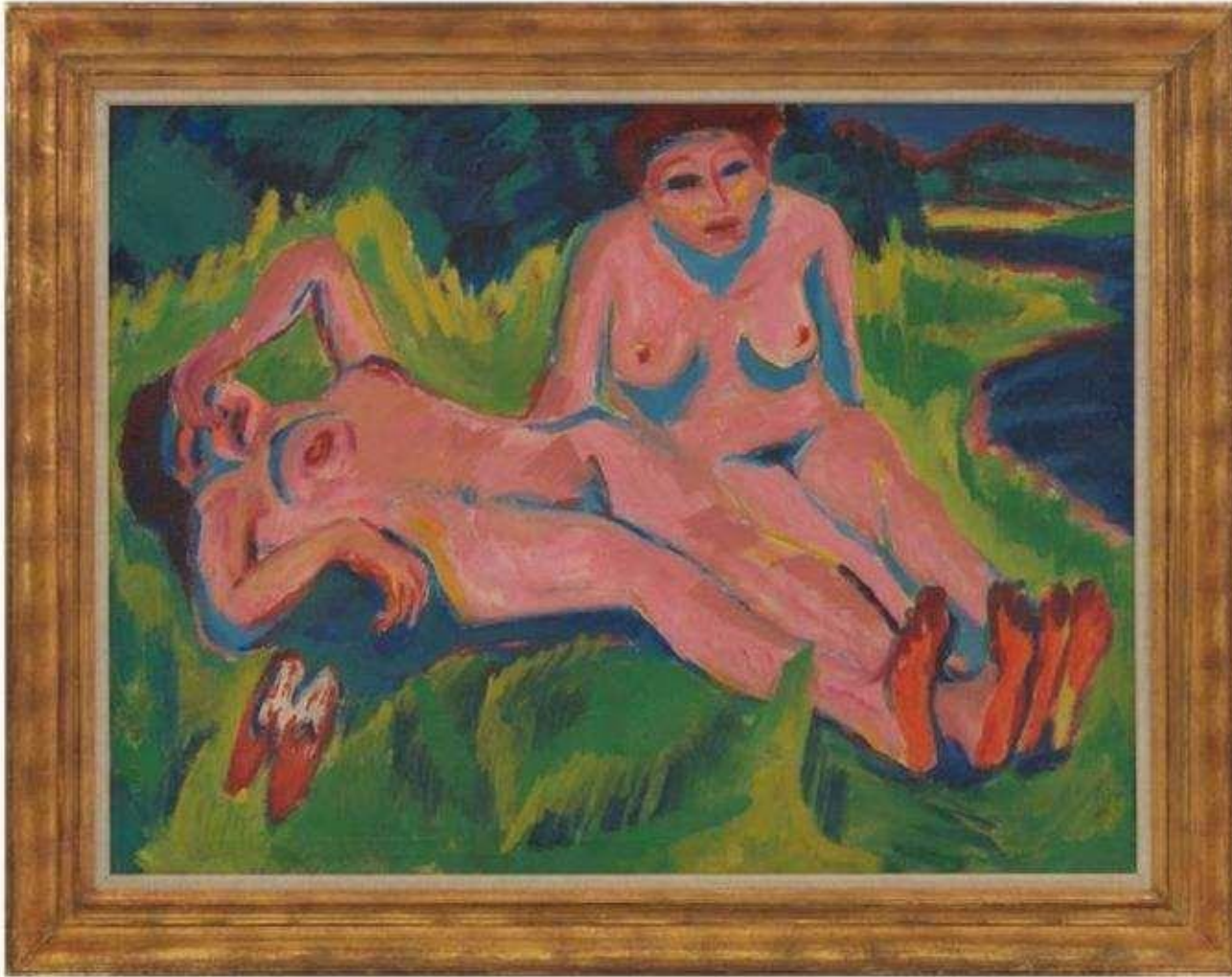
Oil on canvas

Private Collection; L2025:45.7

Born in the Kingdom of Bavaria, Ernst Ludwig Kirchner was studying architecture in Dresden when he co-founded Die Brücke (The Bridge), an art movement that was meant to “bridge” traditional academic styles and the contemporary avant-garde. The group became known for its crucial role in the development of German Expressionism, which made a major impact on modern art in the 20th century. **Zwei rote Tänzerinnen (Two Red Dancers)** was painted when Kirchner was living in Berlin. He became fascinated by street scenes and the chaotic nightlife of the city, particularly as it captured a growing sense of nervous agitation on the eve of World War I.

On view October 1, 2025 – January 4, 2026





Ernst Ludwig Kirchner (German, 1880-1938)

Zwei rosa Akte am See (Two Pink Nudes at the Lake), 1909-1920

Oil on canvas

Private Collection; L2023:74.1

On view July 19 - October 22, 2023