

Artist Resources – Eduardo Chillida (Spanish, 1924-2002)

[Chillida Artist Website](#)

[Chillida at Hauser & Wirth](#)

[Chillida at Cristea Roberts Gallery](#)

[Chillida at Peggy Guggenheim Collection](#)



Chillida
Photograph: Jesús Uriarte

Read an [exhibition review](#) of Chillida’s work held at Sidney Janis Gallery in 1989, published in the New York Times.

In 1997, Sculpture Magazine published an [interview](#) with the artist shortly before he was awarded the Lifetime Achievement Award from the International Sculpture Center.

[Chillida: 1948-1998](#) was on display at the Guggenheim Museum Bilbao in 1999, a major retrospective exhibition that marked the sculptor’s 75th birthday.

The 2002 exhibition [Chillida/Tàpies: Matter and Visual Thought](#) at the Guggenheim New York contrasted works by the two influential Spanish artists.

The Museo Nacional Centro de Arte Reina Sofia organized the exhibition [Eduardo Chillida: Cántico espiritual](#) for display in the Abbey of Santo Domingo de Silos in 2005. The exhibition focused on Chillida’s work related to the monk and Castilian poet San Juan de la Cruz (1524-1591), who the artist began commemorating in 1991.

[Chillida: Rhythm–Time–Silence](#) featured seven large-scale sculptures in the Nelson-Atkins Museum of Art’s Theis Park.

Les Abattoirs in Toulouse, France, installed [Eduardo Chillida: la gravedad insistente](#) in 2018, bringing together over sixty sculptures made from 1949 to 1999.

Memory, Mind, Matter: The Sculpture of Eduardo Chillida traveled to the [Salvador Dalí Museum](#) and [Meadows Museum SMU Dallas](#) in 2018. The exhibition featured 66 works of sculpture, drawing, collage, and artist books by Chillida. Watch an interview with the curator, Luis Chillida, on [YouTube](#).

Zeit Contemporary Art installed [Eduardo Chillida: On Paper](#) in 2019, exploring how the artist’s works on paper informed his sculptures.

In 2022, Hauser & Wirth Somerset launched a [solo exhibition](#) of Chillida’s sculptures. Read reviews in [Wallpaper](#) and [The Guardian](#).

[Jorge Oteiza and Eduardo Chillida: Dialogue in the 1950s and 1960s](#) was on display at the San Telmo Museum in 2022, presenting works by the two artists together for the first time. Read an [interview](#) with the curator, Javier González de Durana.

Kunsthalle Krems installed [Eduardo Chillida: Gravitation](#) in 2023, the first comprehensive monographic exhibition of the artist’s work in Austria.



Chillida in his studio
Photograph: Jesús Uriarte

Eduardo Chillida (Spanish, 1924-2002)

Lotura XIX, 1991

Corten steel, uncoated

Private Collection; L2025:13.1

"I'm one of those people who believe – and this is very important to me – that humans are from a particular place. The ideal is really that we're from one place, that we have roots in one place, but that our arms extend outward to the world: that the ideas of all cultures matter to us.... Me, here, in my Basque country, I feel at home, like a tree planted firmly in its terrain, tied to its territory but with its branches open to the world."
- Eduardo Chillida

Eduardo Chillida studied architecture at the University of Madrid after a debilitating knee injury ended his career as a goalkeeper for the Real Sociedad football team. He turned to sculpture in 1947, first working with human figures and later with abstract forms that he considered to be "realist." **Lotura XIX** is part of a large series of sculptures titled for the Basque word for "connection." The artist worked directly in the forge, cutting and manipulating the steel to create abstracted arms that reach for an embrace.

On view February 19 – May 25, 2025

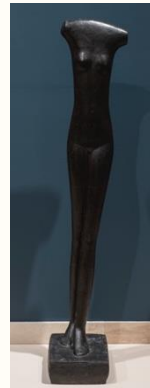




Eduardo Chillida (Spanish, 1924-2002)
Saludo a Giacometti (Salute to Giacometti), 1992
Steel

Private Collection; L2023:74.2

Spanish Basque artist Eduardo Chillida began a promising career as a professional goalkeeper for Real Sociedad before a knee injury led him to become an architect and artist. Though his early works were inspired by the human figure, Chillida turned to abstract sculpture that he considered to be “realist.” **Saludo a Giacometti (Salute to Giacometti)** is an homage to the Swiss sculptor Alberto Giacometti (1901-1966), whose interest in the human condition, Surrealism, and Existentialism in the wake of World War II left a lasting impact on postwar sculpture. Chillida was particularly inspired by Giacometti’s work and enjoyed a long friendship with the artist throughout their careers.



Alberto Giacometti
Femme qui Marche II, 1932-36
Bronze
Private Collection
On display at the JSMA February 16 – May 31, 2020

On view August 16 – November 19, 2023